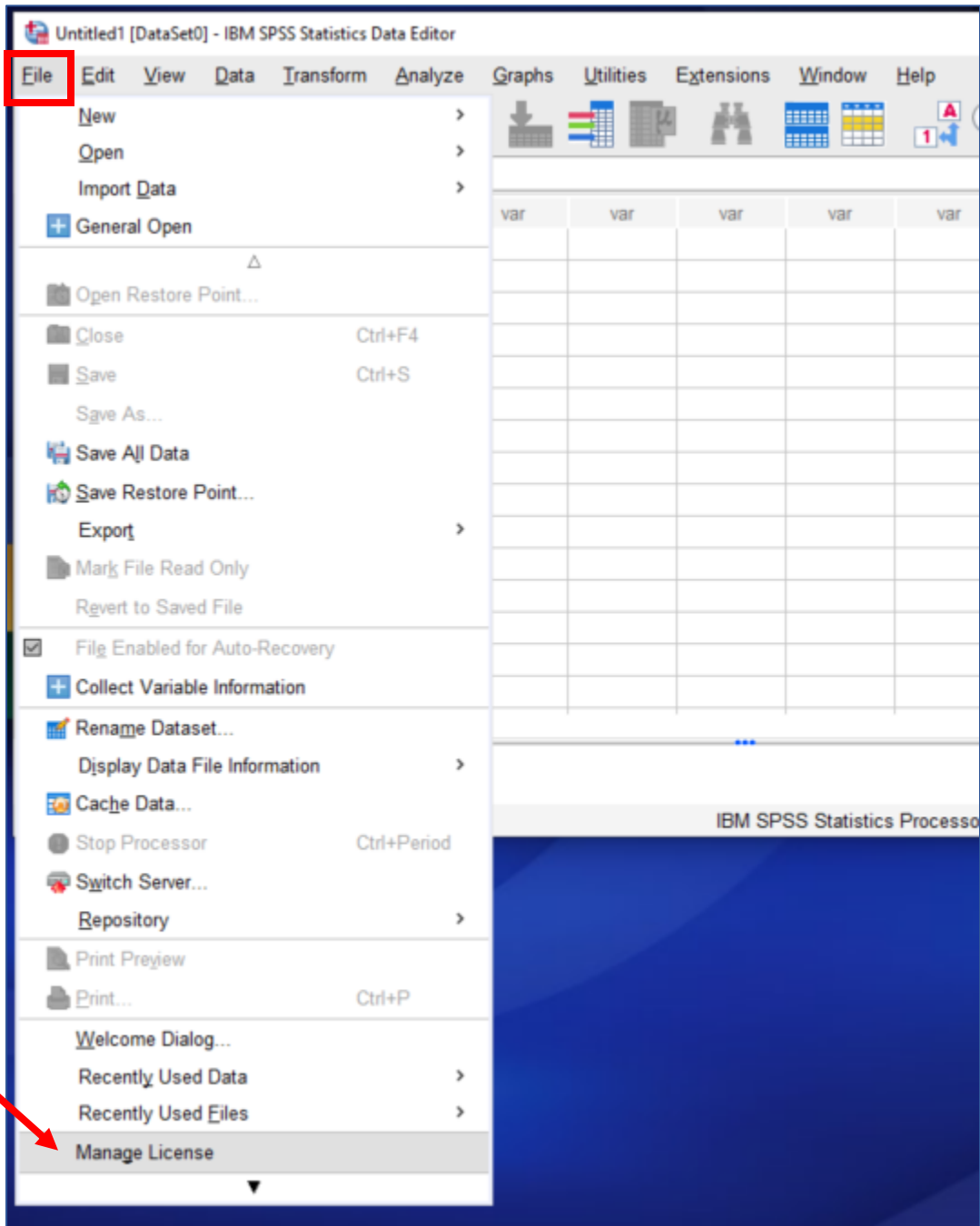


Changing the License Code

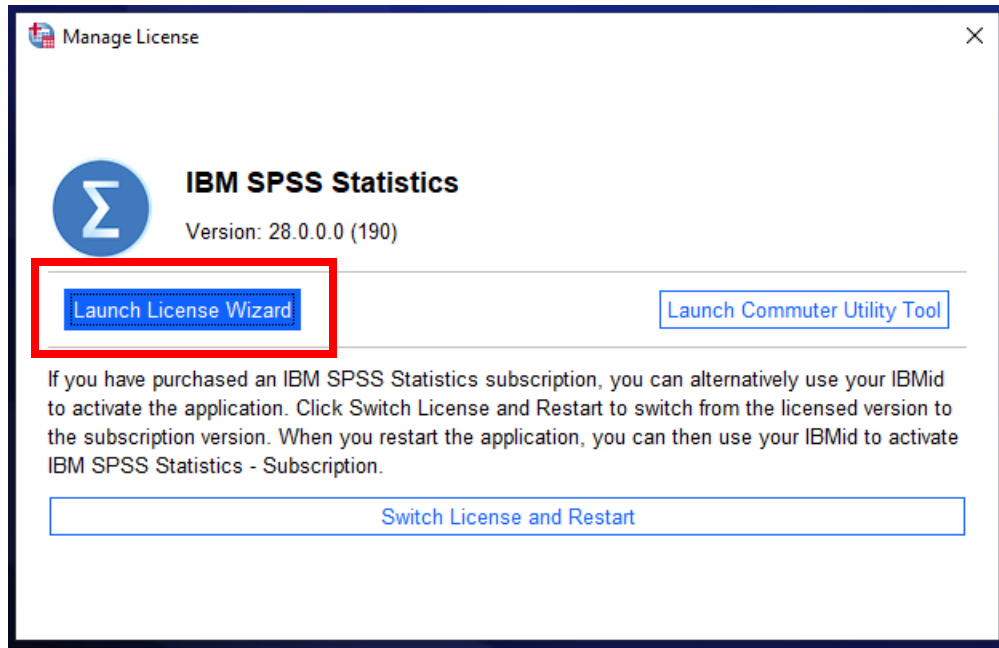
When you Already Have SPSS 28 Loaded on your Computer

- 1) Open SPSS and go to the File tab and then down to *Manage License* (the License Wizard may launch automatically if it is after Aug 31, 2022 – if so, skip down to Step 3).

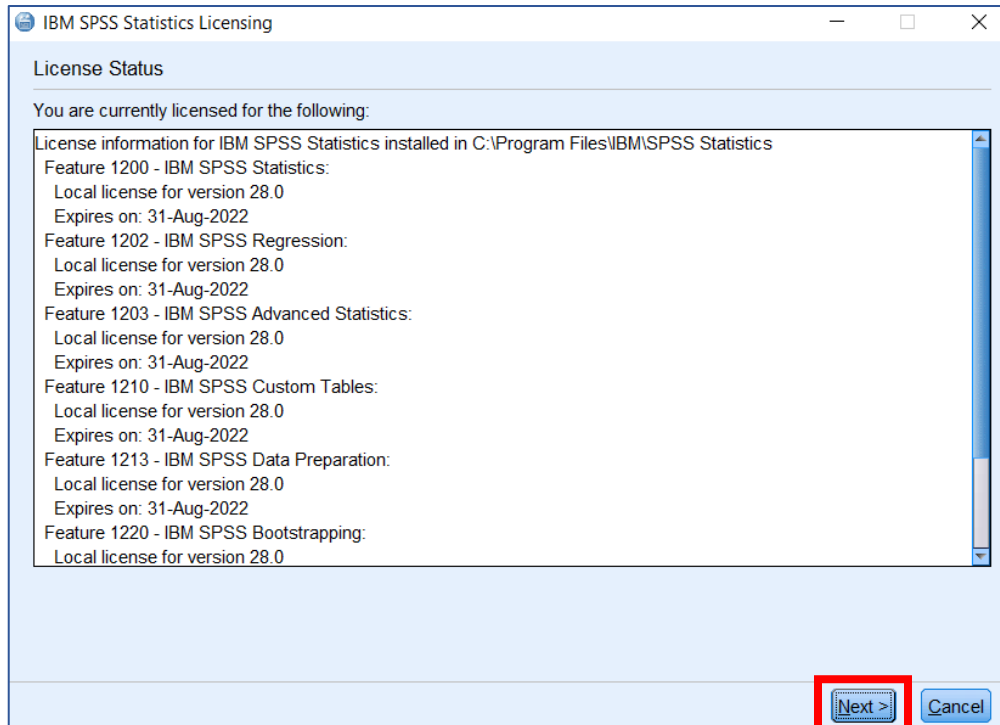


If prompted, click Yes to allow SPSS to make changes to your device.

2) Click on the blue button *Launch License Wizard*.



3) Click *Next* on the License Status screen



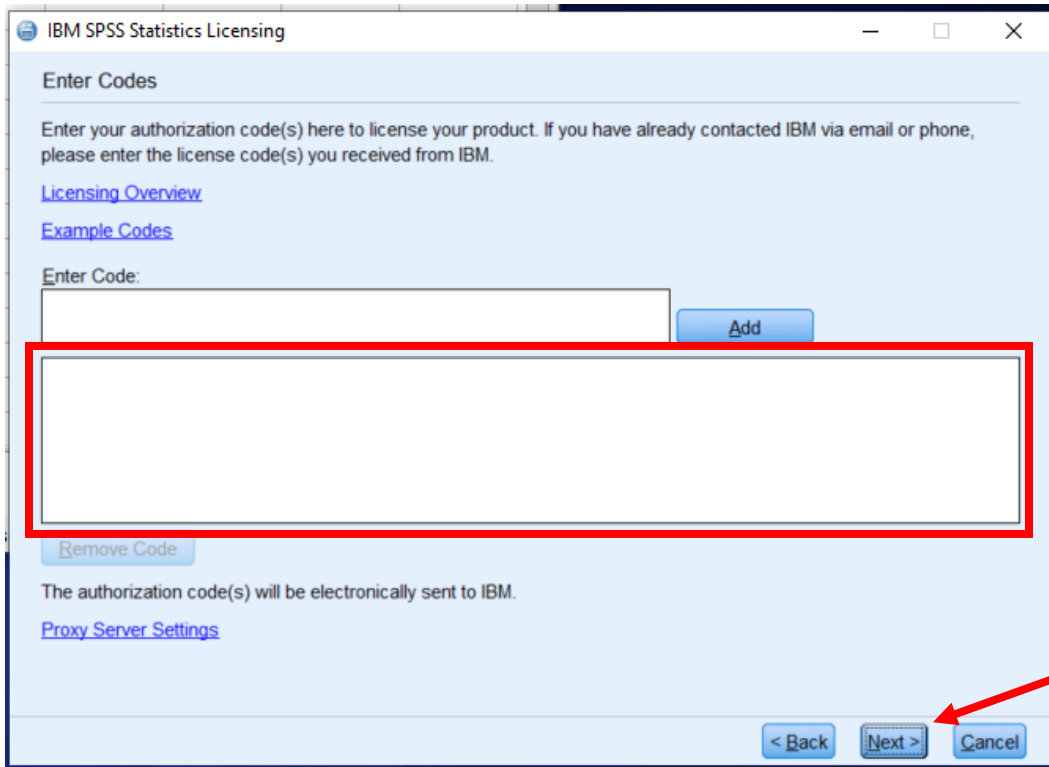
- 4) Leave it on the default for *Authorized user license (I purchased a single copy of the product)* and click *Next*.

The screenshot shows the 'Product Authorization' dialog box in IBM SPSS Statistics Licensing. It has a title bar with the text 'IBM SPSS Statistics Licensing' and standard window controls. The main content area is titled 'Product Authorization' and contains the instruction 'Select one of the following:'. There are two radio button options. The first option, 'Authorized user license (I purchased a single copy of the product). You will be asked to enter the authorization code(s) or license code(s) that you received from IBM.', is selected and highlighted with a red rectangular box. Below this option is a blue hyperlink 'Example Codes'. The second option is 'Concurrent user license (My organization purchased the product and my administrator gave me a computer name or IP address)'. Below the options is a text input field labeled 'Lock Code for this machine is:' and a blue hyperlink 'What is a Lock Code?'. At the bottom right of the dialog are three buttons: '< Back', 'Next >', and 'Cancel'.

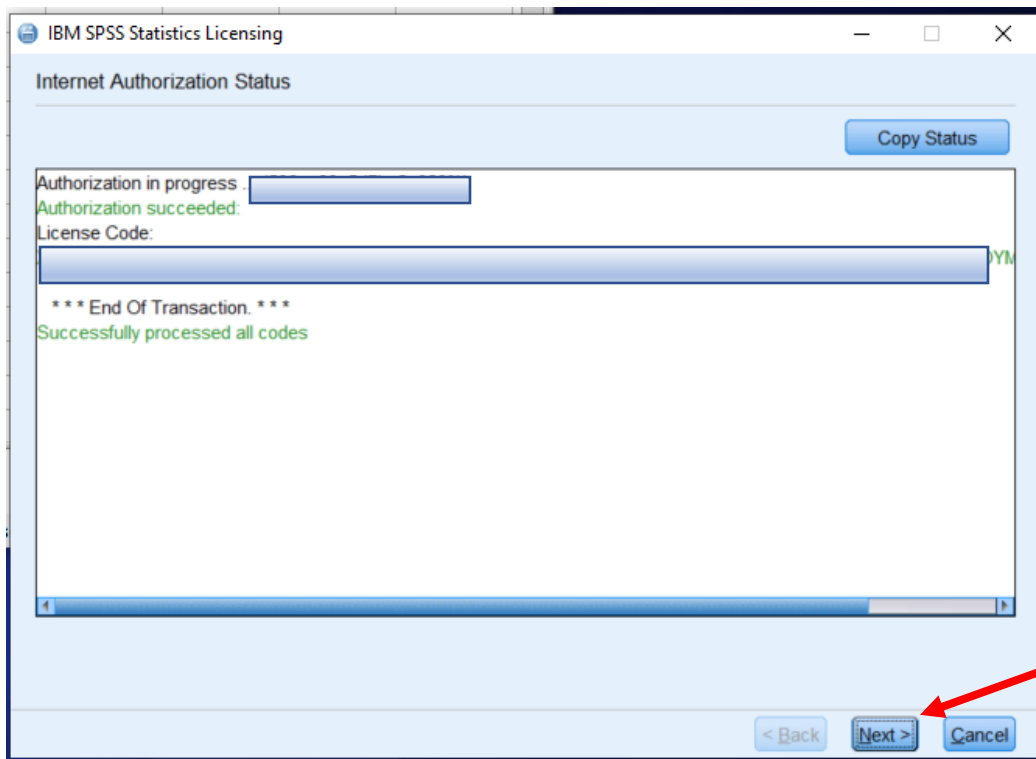
- 5) Enter the [2022-23 license code](#) and click *Add*.

The screenshot shows the 'Enter Codes' dialog box in IBM SPSS Statistics Licensing. It has a title bar with the text 'IBM SPSS Statistics Licensing' and standard window controls. The main content area is titled 'Enter Codes' and contains the instruction 'Enter your authorization code(s) here to license your product. If you have already contacted IBM via email or phone, please enter the license code(s) you received from IBM.' Below this is a blue hyperlink 'Licensing Overview' and another blue hyperlink 'Example Codes'. There is a text input field labeled 'Enter Code:' which is highlighted with a red rectangular box. To the right of this field is a blue button labeled 'Add', with a red arrow pointing to it from the right side of the dialog. Below the input field is a larger empty text area. At the bottom left is a blue button labeled 'Remove Code'. Below the text area is the text 'The authorization code(s) will be electronically sent to IBM.' and a blue hyperlink 'Proxy Server Settings'. At the bottom right of the dialog are three buttons: '< Back', 'Next >', and 'Cancel'.

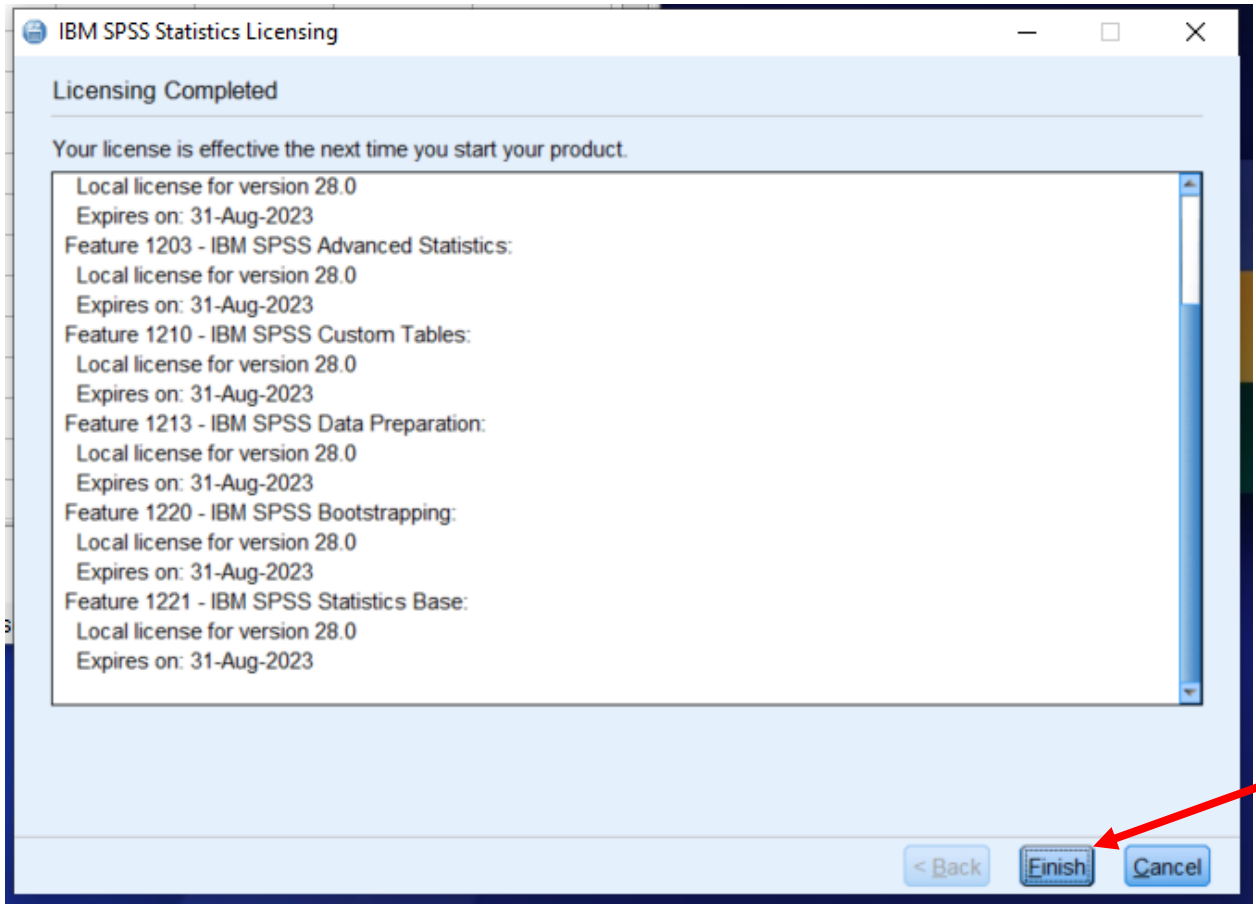
- 6) The code will move down to the larger window after you add it. Click *Next*.



- 7) The authorization processing will begin. Click *Next*.



8) At the *Licensing Completed* screen, click *Finish*.



9) You will need to close and restart SPSS for the new license to apply.

